



How to manage hybrid offices with an intelligent booking solution

In today's session we'll cover


- Why booking solutions are vital to the success of hybrid working models
- How booking data forms a central part of understanding and managing your workplace
- How our intelligent booking solution with integrated sensor technology and analytics enables teams to overcome the historic challenges posed by traditional tools

Live View

London

Available
58 seats 4 rooms





London 




58 / 75
Available seats

4 / 7
Available rooms

Asset type:

-  Rooms
-  Seats

Asset status:

-  Occupied
-  Recently used
-  Available

Finding a space by date & time

Seats | **Rooms**

06 Jan 2022 < >

All day

3:00pm to 4:00pm


Recurring

Suggestions

- London, Marketing - 6 **Booked today**
[Book Seat](#) [Seat details](#)
- London, Marketing - 8 **Booked today**
[Book Seat](#) [Seat details](#)
- London, IT - 6 **Booked today**
[Book Seat](#) [Seat details](#)

London (69)

Filter Seats



The floor plan diagram shows a room layout with various areas labeled: 44 DESKS, 12 SERVICE, 1000, 1001, 1002, 1003, 1004, 1005, 1006, 1007, 1008, 1009, 1010, 1011, 1012, 1013, 1014, 1015, 1016, 1017, 1018, 1019, 1020, 1021, 1022, 1023, 1024, 1025, 1026, 1027, 1028, 1029, 1030, 1031, 1032, 1033, 1034, 1035, 1036, 1037, 1038, 1039, 1040, 1041, 1042, 1043, 1044, 1045, 1046, 1047, 1048, 1049, 1050, 1051, 1052, 1053, 1054, 1055, 1056, 1057, 1058, 1059, 1060, 1061, 1062, 1063, 1064, 1065, 1066, 1067, 1068, 1069, 1070, 1071, 1072, 1073, 1074, 1075, 1076, 1077, 1078, 1079, 1080, 1081, 1082, 1083, 1084, 1085, 1086, 1087, 1088, 1089, 1090, 1091, 1092, 1093, 1094, 1095, 1096, 1097, 1098, 1099, 1100. The diagram includes a 'Filter Seats' button and a 'Back' button.

Booking with filters & suggested spaces

Seats **Rooms**

07 Jan 2022 < >

All day

11:30am to 5:30pm

Recurring

🌟 Suggestions

Sales - 9, London Booked today
[Book Seat](#) [Seat details](#)

London, Standing Desk - 7 Booked today
[Book Seat](#) [Seat details](#)

London, Standing Desk - 2 Booked today
[Book Seat](#) [Seat details](#)

London (66) Filter Seats

Confirmation of bookings

You have booked the following seat

Seat

London, Desk, IT, IT - 4

Date:

Fri Jan 07, 2022

Time:

01:00 PM - 06:00 PM

Floor:

London

Tags:

London Desk IT IT - 4

Edit Booking

Cancel Booking

My Bookings

Seats

Fri, 07 Jan 2022 Full day

London, Standing Desk - 4

London Standing Desk - 4 Standing Desk

Edit Booking Cancel Booking

Fri, 07 Jan 2022 Full day

London, Marketing - 12

London Marketing - 12 Desk Marketing

Edit Booking Cancel Booking

Fri, 07 Jan 2022 8:30am - 12:30pm Automatically cancelled

London, Sales - 7

London Sales - 7 Sales Desk

Book again

Fri, 07 Jan 2022 Full day

London, IT - 6

London Desk IT IT - 6

Edit Booking Cancel Booking

Fri, 07 Jan 2022 8:30am - 12:30pm Automatically cancelled

Standing Desk - 5, London

Standing Desk - 5 Standing Desk London

Book again

Fri, 07 Jan 2022 8:30am - 12:30pm Automatically cancelled

London, Marketing - 6

London Marketing - 6 Desk Marketing

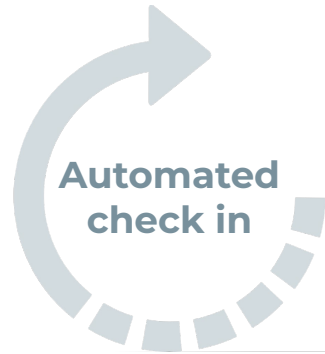
Book again

Booking that makes life easier

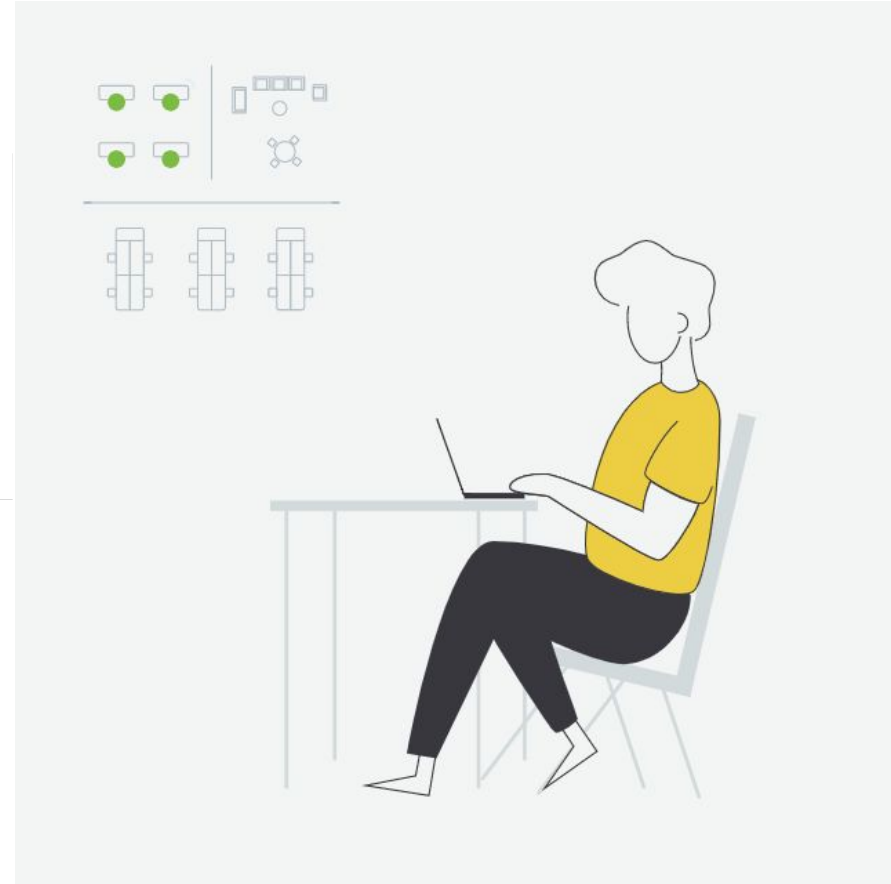
I'm on my way!

- No action or cater for late arrival

Plans changed



What if I don't see an email and don't turn up?



Booking that supports a busy schedule



Cancellation notification

Your booking was cancelled

⚠ It seems like you didn't use the booked seat, so we have cancelled your reservation.

Did you know that 40% of CO2 emission comes from office buildings? To help us reduce our carbon footprint, please cancel your reservations if you don't intend to use the space, so other people can use it.. Thank you for helping us use the space more efficiently.

Seat
London, Desk, IT, IT - 6

Date:
Fri Jan 07, 2022

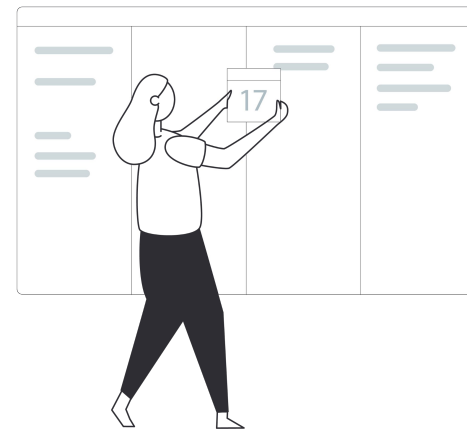
Time:
12:00 AM - 11:59 PM

Floor:
London

Tags:
London Desk IT IT - 6

[Rebook](#)

Focus on the things that matter



Why is an intelligent booking system critical?

- Easy to use = easier adoption
 - Recommendations based on my personal interactions
 - Supports for real life human behaviour
 - auto check-in & auto-release
 - Frees up unused space
- The office will become more fluid and have busier days and times during the week

Forecasting weekly utilisation of the future

Work patterns and rotations will significantly impact how busy the office becomes during the week.

Weekday seat utilisation



Tuesday and Wednesday will see a higher number of people in the office earlier in the day

Monday and Fridays will become less busy

Thursday will have the highest number of people in the office throughout the day

Space occupancy & utilisation technology

Understand how often workspaces or assets are being utilised

- Desks
- Focus rooms
- Meeting rooms



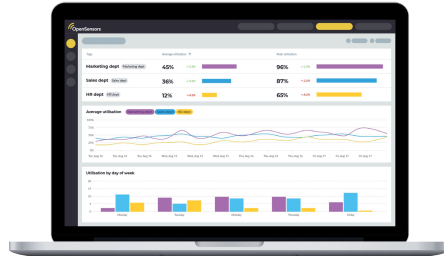
Understand the footfall of free flowing areas

- Meeting rooms
- Open space



opensensors.com

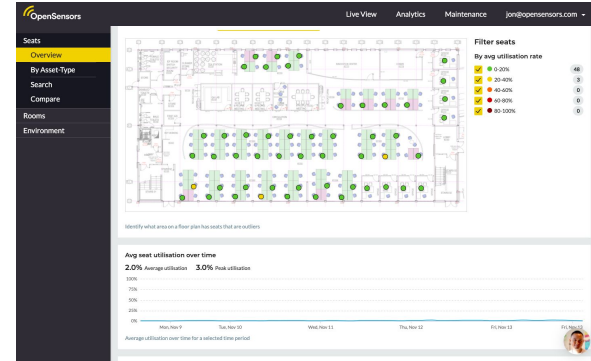
Encrypted data



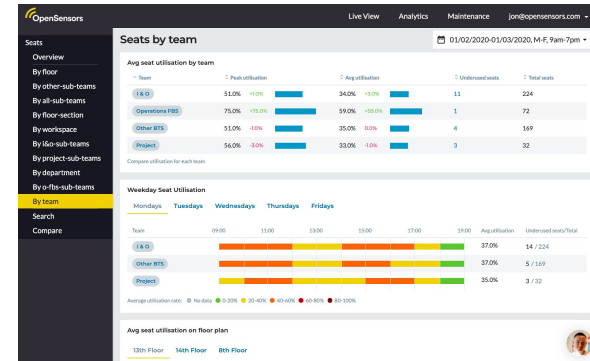
Powerful analytics software

Accessible data anywhere, anytime

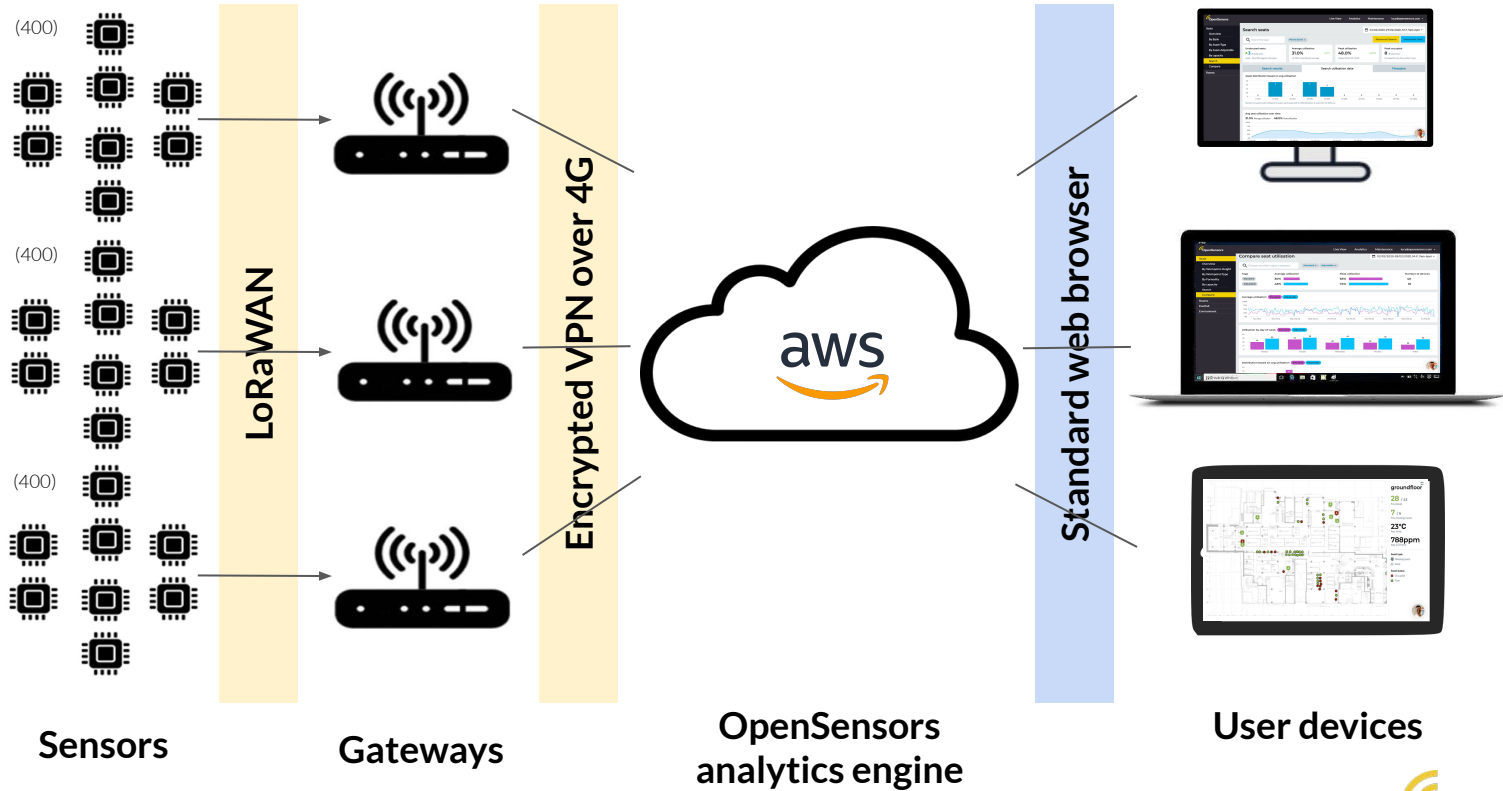
Monitor social distancing



Compare workspaces and asset usage



How sensor data is processed



Key takeaways

Multi-purpose solution that supports

- Ease of Booking
- Analytics to assist with keeping environment relevant to support types of engagement
- Booking v Actual usage
- View availability

The office will become more fluid and have busier days and times during the week

Thank you



Shaping the future of your workplace

Best practice guide on creating a data led workplace strategy



Download the ebook



Return to work survey May 2021

Impacts of the pandemic on the future of work and the implications for businesses



Download the report